

MUS227 Music Theory IV

25 Jan 2019

Please sign the attendance sheet!

From last class



Nadia Boulanger (1887–1979)

French composer, conductor, teacher

— teacher of Aaron Copland, Philip Glass, Burt Bacharach, Quincy Jones, Thea Musgrave, Astor Piazzolla, and many more.

Impressionism

- a style or movement in painting originating in France in the 1860s, characterized by a concern with depicting the visual impression of the moment, especially in terms of the shifting effect of light and color.
- artists like Monet, Renoir, Van Gogh...

Mary Cassatt



Eva Gonzalès



Berthe Morisot



Claude Debussy



a more informal look



Maurice Ravel



and many more



Published by
WQXR Blog

12 'Impressionist' Composers Not Named Debussy or Ravel

<https://www.wqxr.org/story/12-impressionist-works-composers-not-named-debussy-or-ravel/>

Diatonic Modes

- Given white key scales, starting pitch and mode:
 - C — Ionian (major)
 - D — Dorian (natural minor w/+6)
 - E — Phrygian (natural minor w/-2)
 - F — Lydian (major w/+4)
 - G — Mixolydian (major w/-7)
 - A — Aeolian (natural minor)
 - B — Locrian (natural minor w/-2 and -5)

To remember order of modes...

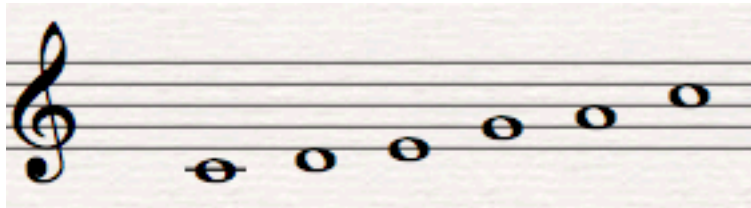
- **I Don't Particularly Like Modes A Lot**

To find key signature quickly...

- Find B Phrygian...
- Ask yourself which note of the C scale the Phrygian mode starts on = E = 3
- Then ask yourself, in which major key/scale is B scale degree 3? = G
- Use G's key signature (1#) and start your scale on B — B C D E F# G A B
- ...Or use intervals to build/analyze scale

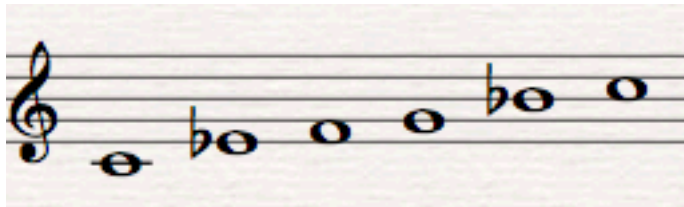
Pentatonic Scales

- Major Pentatonic (like black keys)

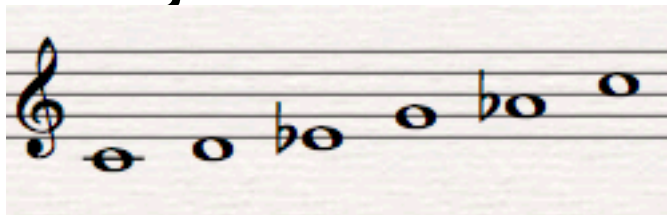


- Minor Pentatonic

These have modes, too!

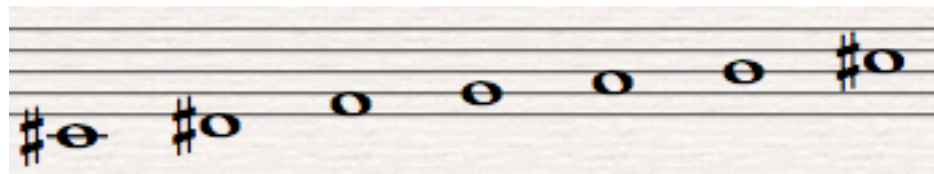
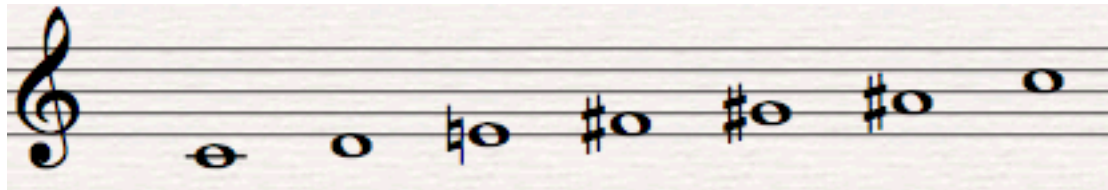


- Hirajoshi Scale



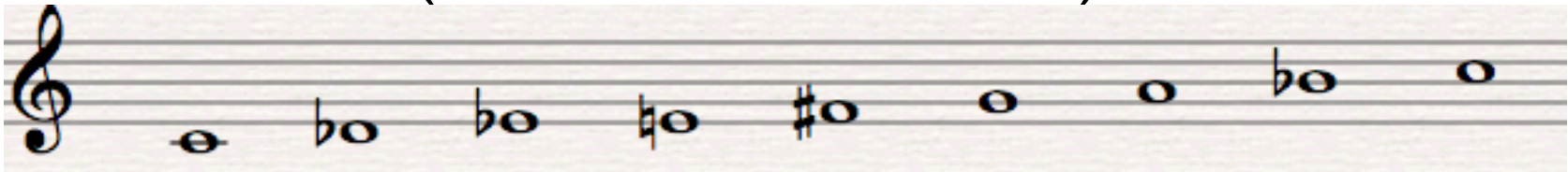
Synthetic Scales

- Whole Tone

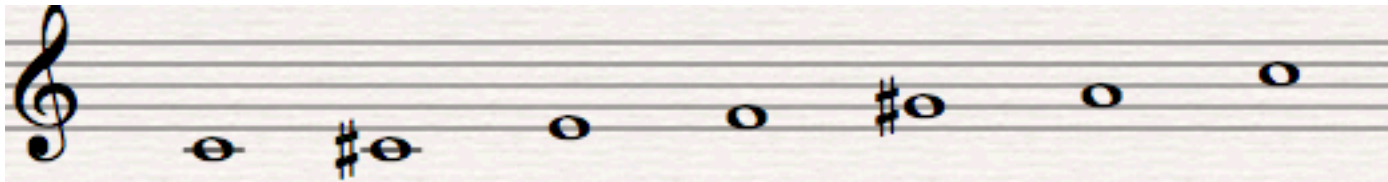


Synthetic Scales

- Octatonic (hwhw... or whwh...)

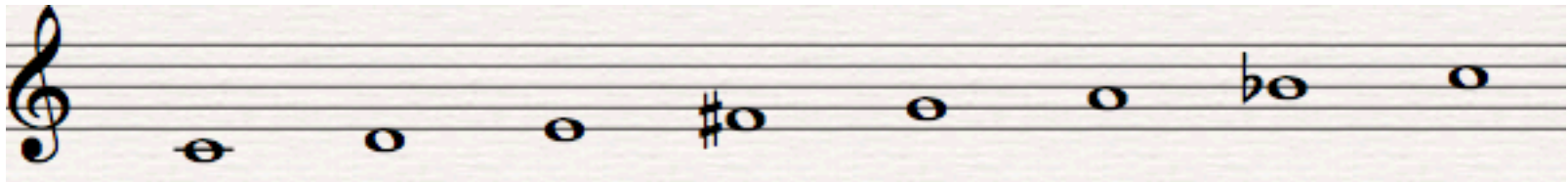


- Hexatonic (2 aug triads m2 apart)



Synthetic Scales

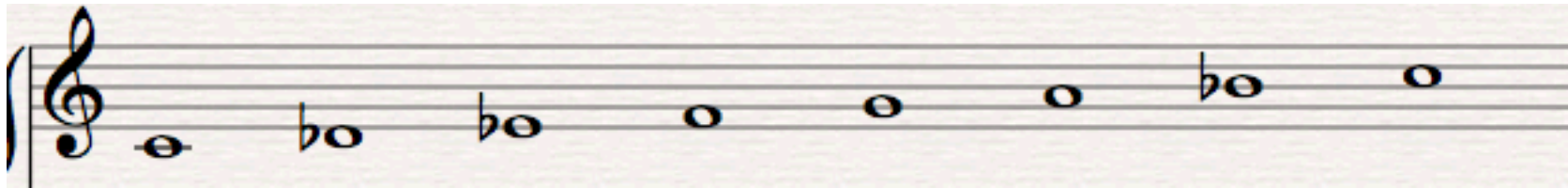
- Lydian-Mixolydian



- First tetrachord is Lydian (CDEF#)
- Second tetrachord is Mixolydian (GABbC)
- As heard in Stravinsky's *Petrouchka: Danse Russe*

Synthetic Scales

- Phrygian-Dorian (nat minor b2 + #6)



- First tetrachord is Phrygian (CD \flat E \flat F)
- Second tetrachord is Dorian (GAB \flat C)