

# MORE ABOUT INTERVALS

17 Sept 2018

# Augmented + Diminished °

- Augmented = half step larger than P or M
  - +2, +3, +4
- Diminished = half step smaller than P or m
  - °2, °3, °4, °5
  - No °unison
    - if you change C to C# or Cb, you automatically make the unison interval larger, so only +unison exists
- Tritone
  - +4 or °5

# Intervals

- Inversion
  - M2 flipped upside down is m7
    - Always M switching to m and vice versa
    - P to P
    - + to °
    - ° to +
  - Total adds up to 9
    - m3–M6
    - P4–P5
    - +2–°7

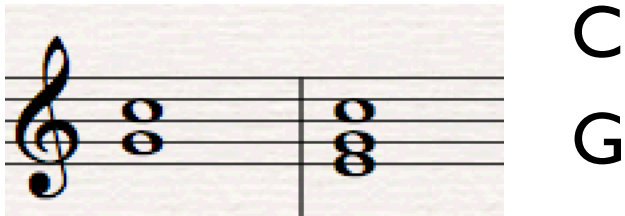
# Consonance vs. Dissonance

- Consonant intervals
  - PU, m3, M3, P4\*, P5, m6, M6, P8
- Dissonant intervals
  - m2, M2, P4\*, m7, M7, anything + or °

\*P4 is dissonant when it creates that interval above the bass voice (lowest voice) = “dbass”

# Consonance vs. Dissonance

- Perfect 4ths
  - Dissonant if it appears above the bass, otherwise consonant



dissonant P4 | consonant P4

# TERMS FOR REVIEW

- Augmented
- Diminished
- Tritone
- Interval Inversion
- Consonance / Consonant
- Dissonance / Dissonant