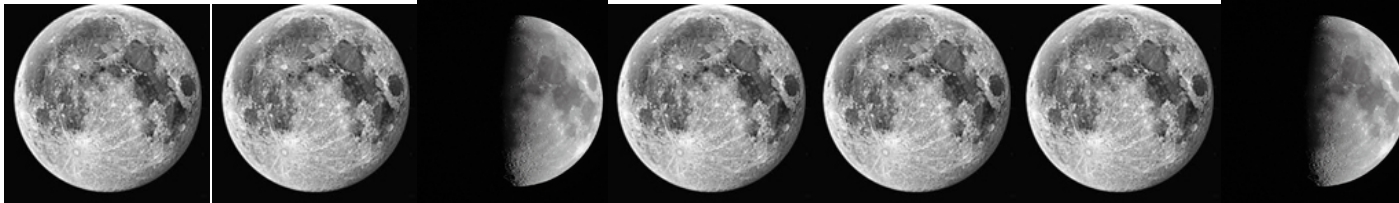


# SCALES & KEYS REVIEW

14 Sept 2016

# MAJOR SCALE

## scale degree numbers



Whole    Whole    Half    Whole    Whole    Whole    Half

tetrachord

tetrachord

C

D

E

F

G

A

B

C

^

^

^

^

^

^

^

^

1

2

3

4

5

6

7

1

tonic

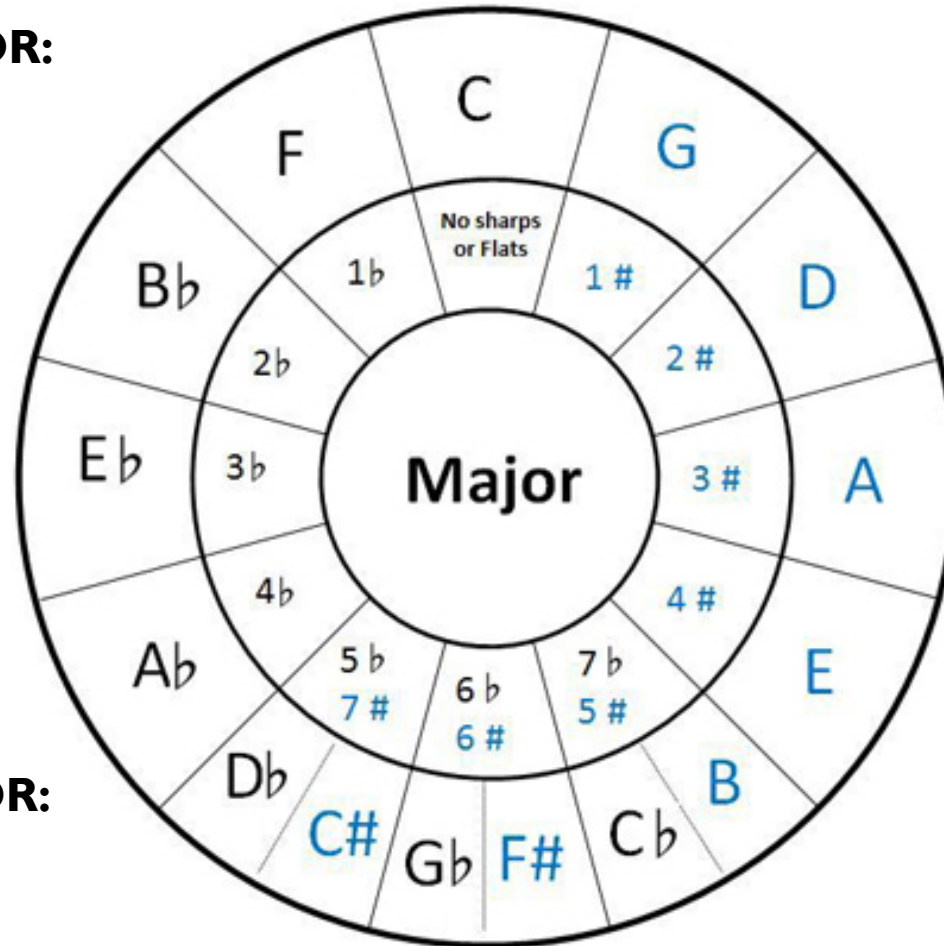
LT

tonic

# KEY SIGNATURES

## Circle of Fifths

**RELATIVE MINOR:**  
same key signature



MAJOR

^^^

(3 half steps)

vvv

NATURAL MINOR

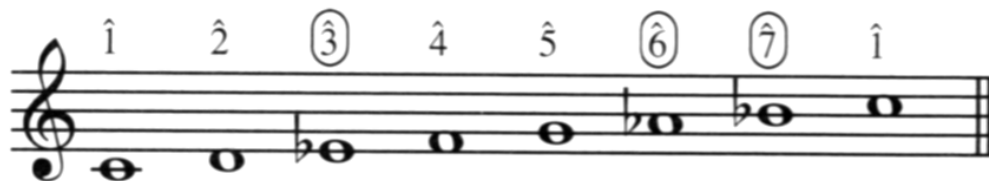
**PARALLEL MINOR:**  
same PITCH

# THREE TYPES OF MINOR SCALES

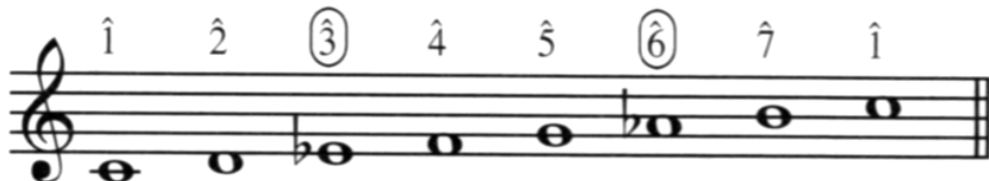
- NATURAL MINOR
  - key signature
- HARMONIC MINOR
  - now with the leading tone!
- MELODIC MINOR
  - different up + down to avoid augmented 2<sup>nd</sup>

# THREE TYPES OF MINOR SCALES

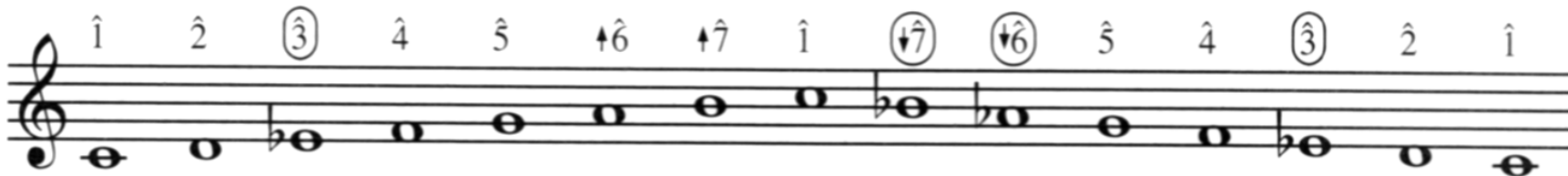
Natural minor



Harmonic minor



Melodic minor



# Beethoven – Piano Sonata No. 21 (Waldstein), I. Allegro con brio



# Beethoven – *Piano Sonata No. 21 in C* (*Waldstein*), I. Allegro con brio

I – C major

2 – F#??? (I guess we're in G major)

5 – B<sup>b</sup>? (must be F major)

6 – A<sup>b</sup> (make that F minor)

7 – A<sup>b</sup>+E<sup>b</sup> (C harmonic minor)

II – LH uses melodic minor to get to C

# Beethoven – *Piano Sonata No. 2* in C (*Waldstein*), I. Allegro con brio

13 – C major

14 – F#??? (I guess we're in G major)

18 – G#? (must be A harmonic minor)

21-23 – A>A#>B (with F# and D# = E harmonic minor)

24 – chromatic scale for extra figuration

27 – A# appears as neighbor to reinforce B

31 – four #s = E major — second theme begins 36



# Beethoven – *Piano Sonata No. 21 in C* (*Waldstein*), I. Allegro con brio

- 70 – C natural appears (fills in B-C-C# 69-71)
- 74 – D natural appears (A harmonic minor)
- 77 – F# + D# (must be E harmonic minor)
- 84 – F natural (now in C major!!)



# IDENTIFY THE SCALE

MAJOR



NATURAL MINOR



HARMONIC MINOR



MELODIC MINOR

