

MINOR SCALES & KEYS

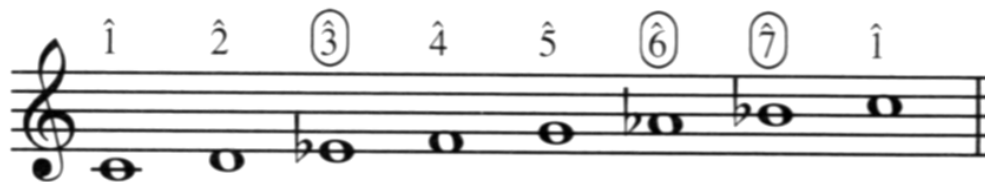
12 Sept 2016

THREE TYPES OF MINOR SCALES

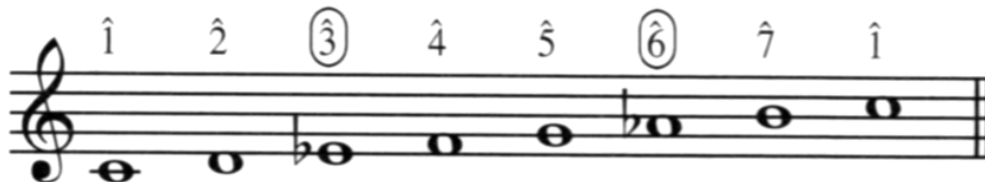
- NATURAL MINOR
 - key signature
- HARMONIC MINOR
 - now with the leading tone!
- MELODIC MINOR
 - different up + down to avoid augmented 2nd

THREE TYPES OF MINOR SCALES

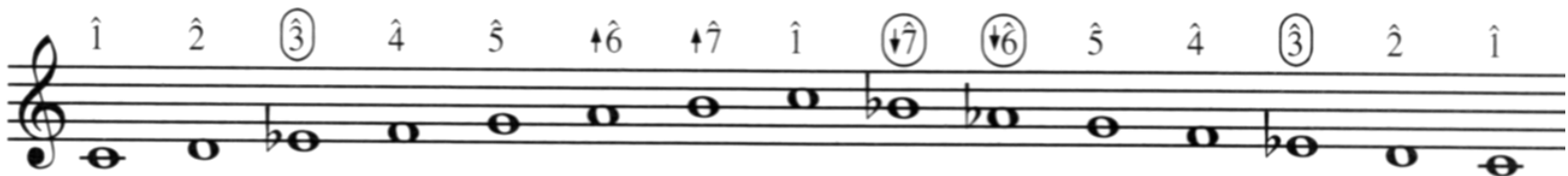
Natural minor



Harmonic minor



Melodic minor



NATURAL MINOR SCALE in A



Whole

Half

Whole

Whole

Half

Whole

Whole

A

B

C

D

E

F

G

A

^

^

^

^

^

^

^

^

1

2

^b3

4

5

^b6

^b7

8

NATURAL MINOR SCALE in A



Whole

Half

Whole

Whole

Half

Whole

Whole

A

B

C

D

E

F

G

A

la

ti

do

re

mi

fa

sol

la

NATURAL MINOR SCALE in C



Whole Half Whole Whole Half Whole Whole

C	D	E ^b	F	G	A ^b	B ^b	C
^	^	^	^	^	^	^	^
1	2	^b 3	4	5	^b 6	^b 7	8

NATURAL MINOR SCALE in D



Whole Half Whole Whole Half Whole Whole

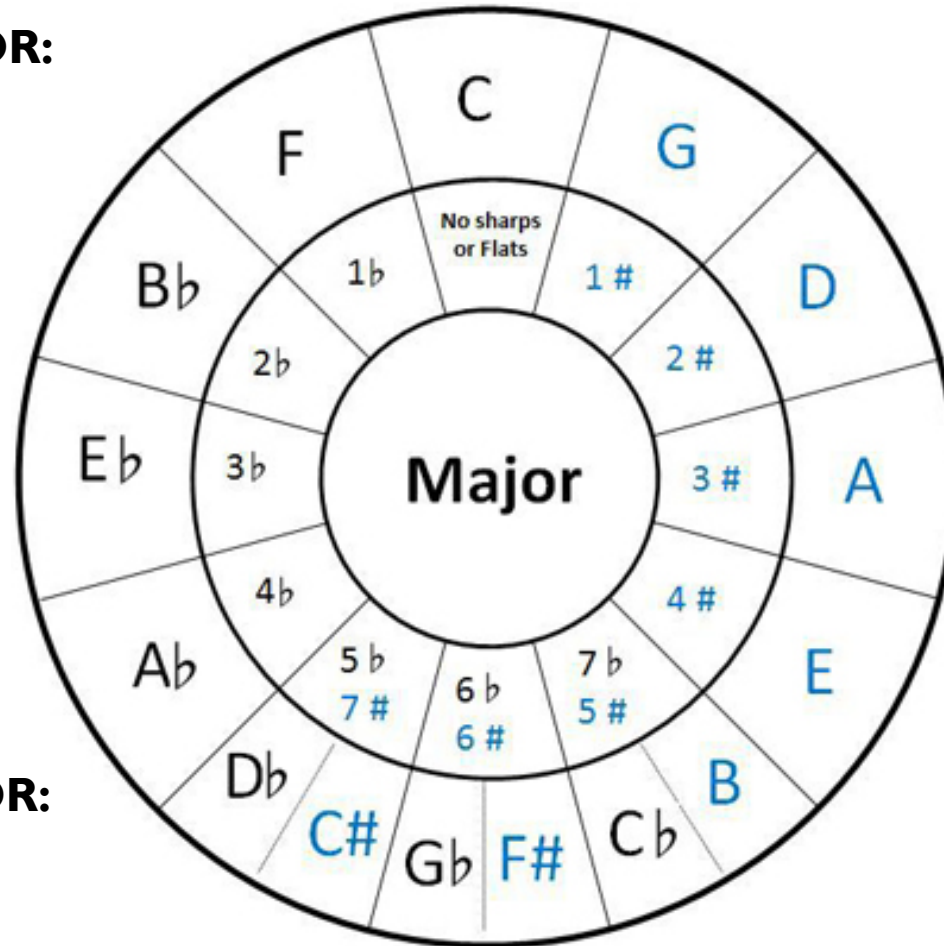
C D E^b F G A^b B^b C

D E F G A B^b C D

KEY SIGNATURES

Circle of Fifths

RELATIVE MINOR:
same key signature



MAJOR

^^^

(3 half steps)

vvv

NATURAL MINOR

PARALLEL MINOR:
same PITCH

HARMONIC MINOR SCALE

in A



Whole Half Whole Whole Half +2 Whole

A B C D E F G# A

^ ^ ^ ^ ^ ^ ^ ^ ^
 | 2 ^b3 4 5 ^b6 7 |

LEADING TONE appears! Helps V lead to I.

HARMONIC MINOR SCALE in C



Whole Half Whole Whole Half +2 Whole

C D E^b F G A^b B C

^ ^ ^ ^ ^ ^ ^ ^ ^
 I 2 ^b3 4 5 ^b6 7 I

LEADING TONE appears! Helps V lead to I.

HARMONIC MINOR SCALE in C



Whole

Half

Whole

Whole

Half

+2

Whole

C

D

E^b

F

G

A^b

B

C

la

ti

do

re

mi

fa

si

la

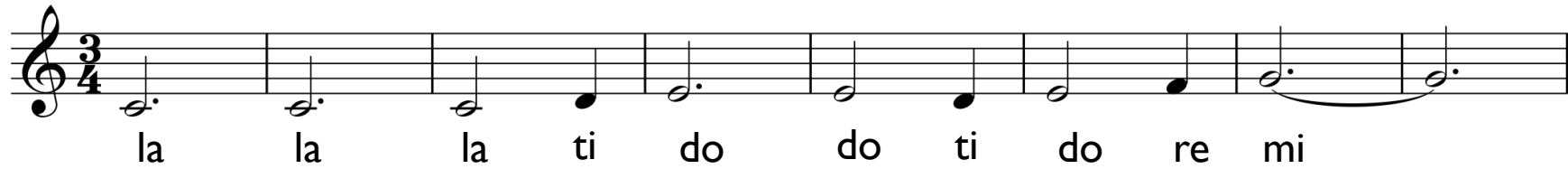
LEADING TONE appears! Helps V lead to I.

SIGHT SINGING

1 1 1 2 3 3 2 3 4 5

1 5 3 1 5 4 3 2 1

SIGHT SINGING



la la la ti do do ti do re mi

A musical staff in 3/4 time with a treble clef. The melody consists of the following notes: G4 (half note), A4 (half note), B4 (half note), C5 (quarter note), B4 (half note), A4 (quarter note), G4 (quarter note), F4 (quarter note), E4 (quarter note), D4 (quarter note), C4 (half note), and B3 (half note). The lyrics are written below the staff, aligned with the notes.



la mi do la mi re do ti la

A musical staff in 3/4 time with a treble clef. The melody consists of the following notes: G4 (quarter note), A4 (quarter note), B4 (quarter note), C5 (quarter note), B4 (quarter note), A4 (quarter note), G4 (quarter note), F4 (quarter note), E4 (quarter note), D4 (quarter note), C4 (half note), B3 (half note), A3 (half note), and G3 (half note). The lyrics are written below the staff, aligned with the notes.

SIGHT SINGING

1
5
2 3 2 1
5 7 1 7

8

5 7 4 5
1 7 5 4 3

14

2
1 5 4 3 2 1 7 1

SIGHT SINGING

la mi ti do ti la mi sol la sol

8

mi sol re mi la sol mi re do

14

ti la mi re do ti la sol la

MAKE IT HARMONIC MINOR

1
5
2 3 2 1
5 7 1 7

8

5 7 4 5
1 7 5 4 3

14

2
1 5 4 3 2 1 7 1

MAKE IT HARMONIC MINOR

la mi ti do ti la mi si la si

8

mi si re mi la si mi re do

14

ti la mi re do ti la si la

MELODIC MINOR SCALE in C (going UP)



Whole Half Whole Whole Whole Whole Half

C D E_b F G A B C

la ti do re mi fi si la

5-6-7-8 is like major on way up
Avoids augmented 2nd to **LEADING TONE!**

MELODIC MINOR SCALE in C (going DOWN)



Whole

Half

Whole

Whole

Half

Whole

Whole

C

D

E_b

F

G

A_b

B_b

C

la

ti

do

re

mi

fa

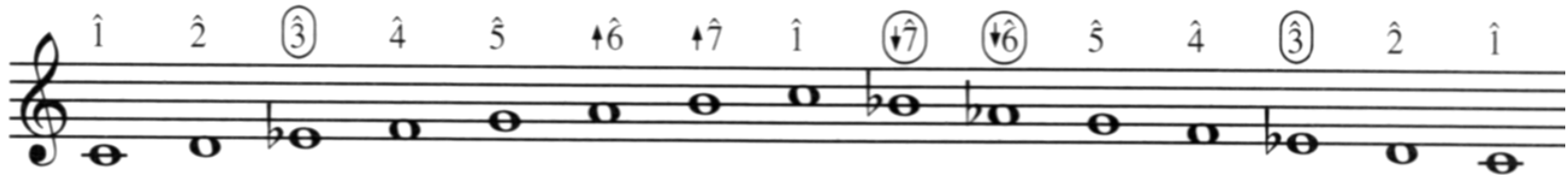
sol

la

8-7-6-5 is like natural minor on way down
Avoids augmented 2nd (no leading tone)!

MELODIC MINOR

Melodic minor



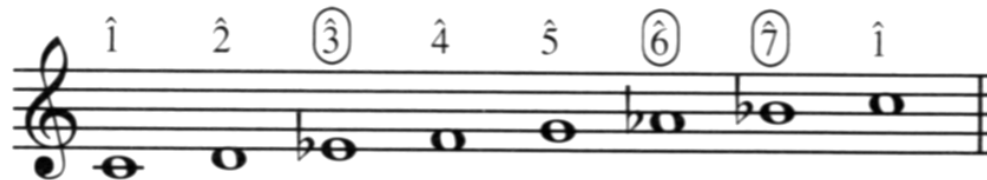
Schubert – *Die Wintereisse* (I. Gute Nacht)

1 6 4 2 | 1 5 3 1 | 3 4 5 5 5 #6 #7 |

1 6 4 2 | 1 5 3 1 | 3 4 5 5 5 5 |

THREE TYPES OF MINOR SCALES

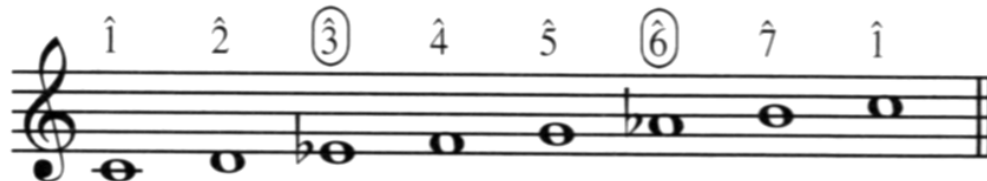
Natural minor



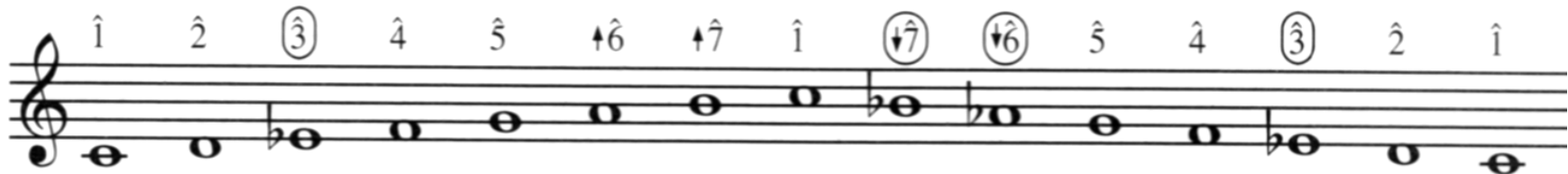
MINOR PENTACHORD:

1-2-3-4-5 always same

Harmonic minor



Melodic minor



TERMS FOR REVIEW

- NATURAL MINOR
- HARMONIC MINOR
- MELODIC MINOR
- MINOR PENTACHORD
- RELATIVE MINOR
- PARALLEL MINOR
- LEADING TONE
- AUGMENTED 2ND