

MINOR SCALES & KEYS

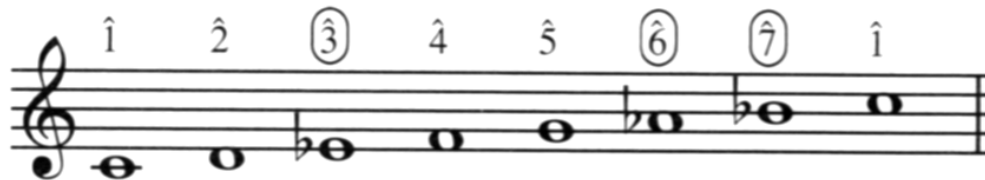
11 Sept 2017

THREE TYPES OF MINOR SCALES

- NATURAL MINOR
 - key signature
- HARMONIC MINOR
 - now with the leading tone!
- MELODIC MINOR
 - different up + down to avoid augmented 2nd

THREE TYPES OF MINOR SCALES

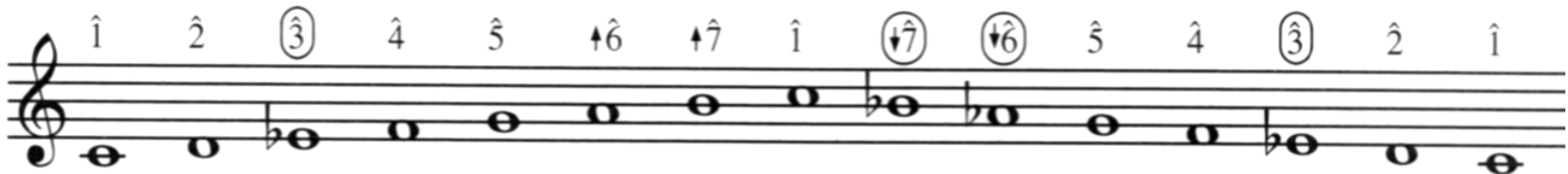
Natural minor



Harmonic minor



Melodic minor



NATURAL MINOR SCALE in A



Whole

Half

Whole

Whole

Half

Whole

Whole

A

B

C

D

E

F

G

A

^

^

^

^

^

^

^

^

1

2

^b3

4

5

^b6

^b7

8

NATURAL MINOR SCALE in A



Whole

Half

Whole

Whole

Half

Whole

Whole

A

B

C

D

E

F

G

A

do

re

me

fa

sol

le

te

do

NATURAL MINOR SCALE in C



Whole Half Whole Whole Half Whole Whole

C D E^b F G A^b B^b C

^ ^ ^ ^ ^ ^ ^ ^ ^
1 2 ^b3 4 5 ^b6 ^b7 8

NATURAL MINOR SCALE in D



Whole

Half

Whole

Whole

Half

Whole

Whole

C

D

E^b

F

G

A^b

B^b

C

D

E

F

G

A

B^b

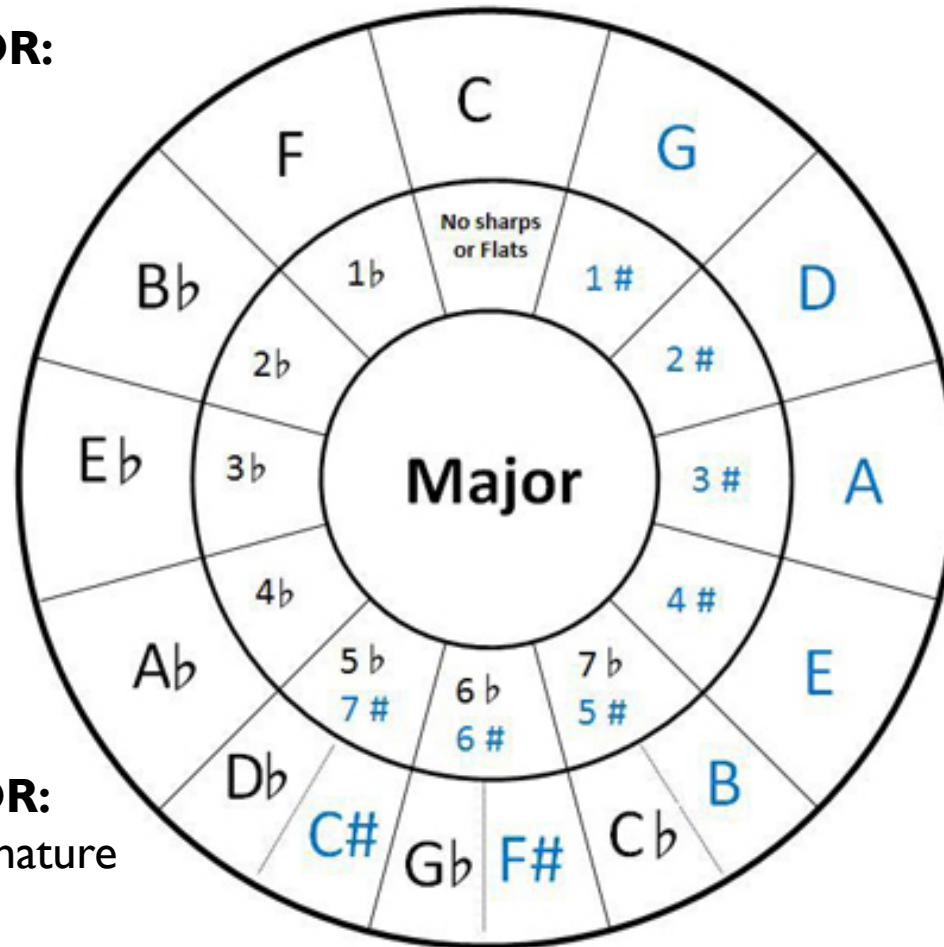
C

D

KEY SIGNATURES

Circle of Fifths

RELATIVE MINOR:
same key signature



MAJOR
^^^
(3 half steps = m3)
vvv
NATURAL MINOR

C major
(m3)
A minor

PARALLEL MINOR:
same PITCH, diff. signature
C major + C minor

HARMONIC MINOR SCALE in A



Whole Half Whole Whole Half +2 Whole

A B C D E F G# A

^ ^ ^ ^ ^ ^ ^ ^ ^
I 2 ^b3 4 5 ^b6 7 I

LEADING TONE appears! Helps V lead to I.

HARMONIC MINOR SCALE in C



Whole Half Whole Whole Half +2 Whole

C D E \flat F G A \flat B C

^ ^ ^ ^ ^ ^ ^ ^ ^
 | 2 \flat 3 4 5 \flat 6 7 |

LEADING TONE appears! Helps V lead to I.

HARMONIC MINOR SCALE in C



Whole

Half

Whole

Whole

Half

+2

Whole

C

D

E_b

F

G

A_b

B

C

do

re

me

fa

sol

le

ti

do

LEADING TONE appears! Helps V lead to I.

SIGHT SINGING

1 1 1 2 3 3 2 3 4 5

1 5 3 1 5 4 3 2 1

SIGHT SINGING

do do do re me me re me fa sol

do sol me do sol fa me re do

SIGHT SINGING

1
5
2 3 2 1
5 7 1 7


8

5 7 4 5
1 7 5 4 3

14


2
1 5 4 3 2 1 7 1

SIGHT SINGING




do sol re me re do sol te do te

8



sol te fa sol do te sol fa me

14



re do sol fa me re do te do

MAKE IT HARMONIC MINOR

1
5
2 3 2 1
5 7 1 7

8

5 7 4 5
1 7 5 4 3

14

2
1 5 4 3 2 1 7 1

MAKE IT HARMONIC MINOR

do sol re me re do sol ti do ti

8

sol ti fa sol do ti sol fa me

14

re do sol fa me re do ti do

MELODIC MINOR SCALE in C (going UP)



Whole

Half

Whole

Whole

Whole

Whole

Half

C

D

E_b

F

G

A

B

C

do

re

me

fa

sol

la

ti

do

5-6-7-8 is like major on way up

Avoids augmented 2nd to **LEADING TONE!**

MELODIC MINOR SCALE in C (going DOWN)



Whole

Half

Whole

Whole

Half

Whole

Whole

C

D

E_b

F

G

A_b

B_b

C

do

re

me

fa

sol

le

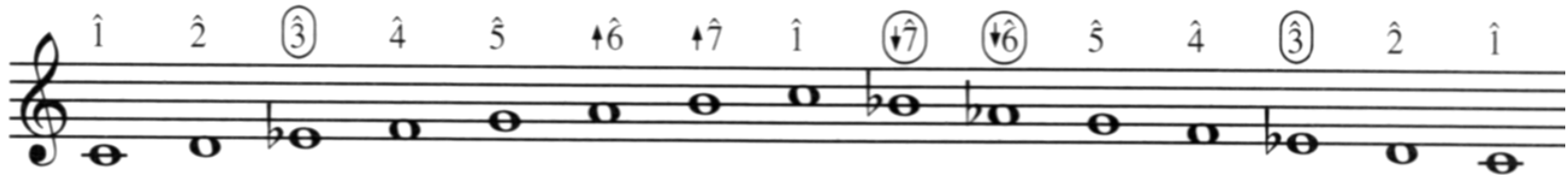
te

do

8-7-6-5 is like natural minor on way down
Avoids augmented 2nd (no leading tone)!

MELODIC MINOR

Melodic minor



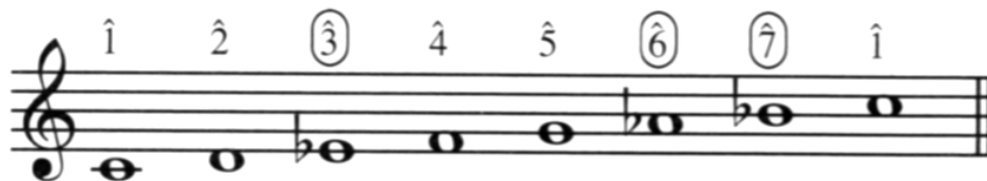
Schubert – *Die Winterreise* (I. Gute Nacht)

1 6 4 2 | 1 5 3 1 | 3 4 5 5 5 #6 #7 |

1 6 4 2 | 1 5 3 1 | 3 4 5 5 5 5 |

THREE TYPES OF MINOR SCALES

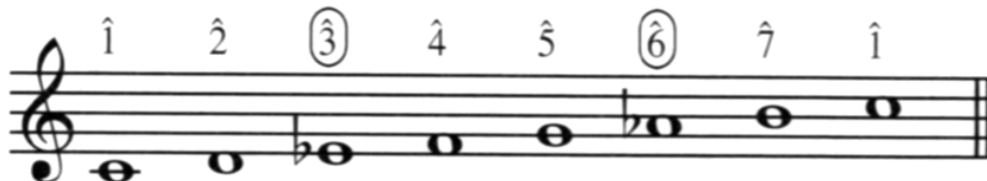
Natural minor



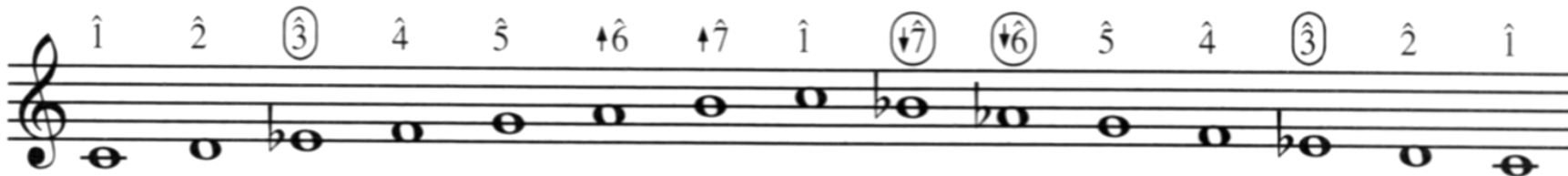
MINOR PENTACHORD:

1-2-3-4-5 always same

Harmonic minor



Melodic minor



TERMS FOR REVIEW

- NATURAL MINOR
- HARMONIC MINOR
- MELODIC MINOR
- MINOR PENTACHORD
- RELATIVE MINOR
- PARALLEL MINOR
- LEADING TONE
- AUGMENTED 2ND (+2)