

EXAM 2 review



le+ e a e2e+ea e 3e +e ae le + e ae 2e +e ae 3e+eae

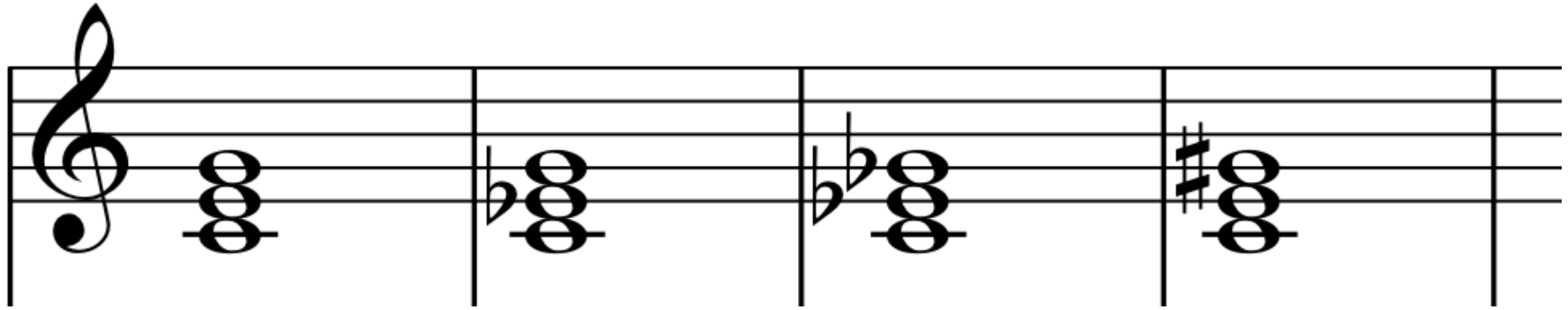


TRIADS REVIEW

- Chords built with thirds
 - From bottom up
- ROOT POSITION
 - 5th of the chord (G)
 - 3rd of the chord (E)
 - Root (C)



TYPES OF TRIADS



MAJOR

MINOR

DIMINISHED

AUGMENTED

m3

M3

M3

m3

m3

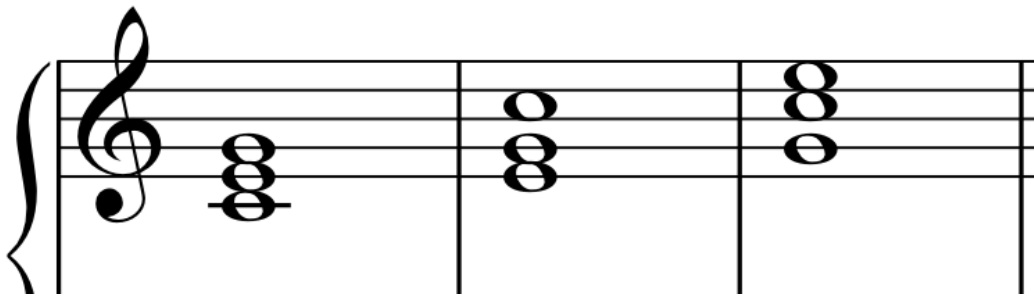
m3

M3

M3

INVERSIONS of TRIADS

– Rearrange position of notes



POSITION: ROOT

1st Inversion

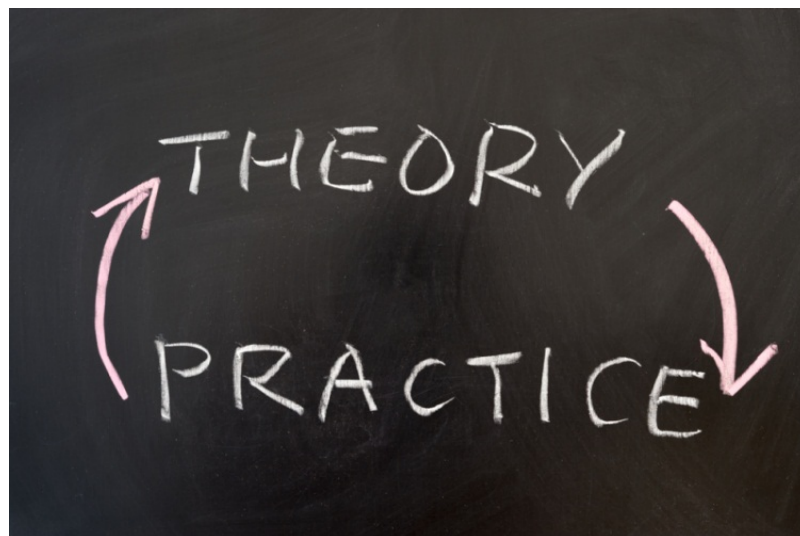
2nd Inversion

BASS: Root

3rd

5th

,



SEVENTH CHORDS

11 Oct 2017

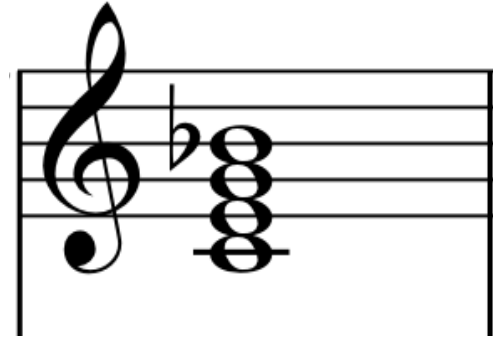
SEVENTH CHORDS

- TAKE A TRIAD and add one more 3rd on top!
- Now you have 4 chord members...
 - 7th
 - 5th
 - 3rd
 - root

SEVENTH CHORDS

DOMINANT SEVENTH

Major triad with m7 on top
lead sheet: **C7**



aka **Mm7** (MAJOR MINOR 7th)

7th (**B^b**)

5th (**G**)

3rd (**E**)

Root (**C**)

SEVENTH CHORDS

MINOR SEVENTH

minor triad with m7 on top
lead sheet: **Cm7** (or C-7)



7th (B^b)

5th (G)

3rd (E^b)

Root (C)

SEVENTH CHORDS

MAJOR SEVENTH

Major triad with **M7** on top
lead sheet: **Cmaj7** (C Δ 7)

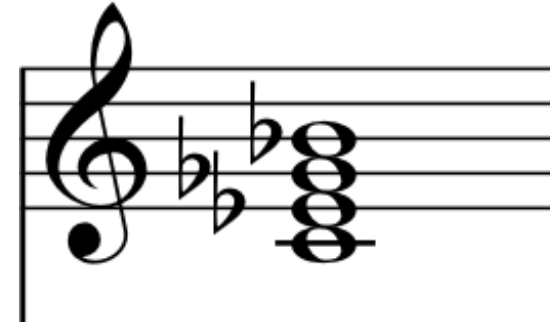
7th (B)
5th (G)
3rd (E)
Root (C)



THIS 7th is 1/2 step lower
than root!

SEVENTH CHORDS

HALF-DIMINISHED SEVENTH
diminished triad with m7 on top
lead sheet: **C^ø7**



7th (B[♭])

5th (G[♭])

3rd (E[♭])

Root (C)

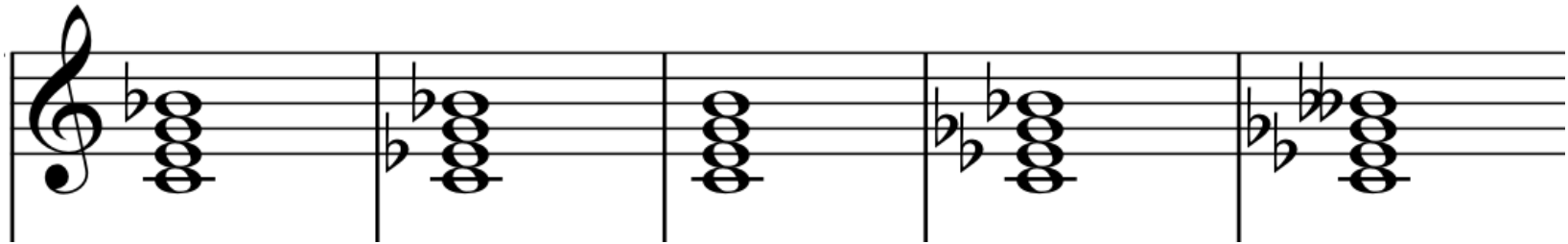
SEVENTH CHORDS

FULLY-DIMINISHED SEVENTH
diminished triad with °7 on top
lead sheet: **C°7**



7th (B^{bb})
5th (G^b)
3rd (E^b)
Root (C)

TYPES OF SEVENTH CHORDS



DOMINANT

MINOR

MAJOR

HALF-
DIMINISHED

FULLY-
DIMINISHED

MAJOR+m7

minor+m7

MAJOR+M7

dim+m7

dim+°7

C7

Cm7

Cmaj7

Cø7

C°7

HOMework NOTE!

- I will accept $Mm7$ for $dom7$, but prefer “ $dom7$ ”