

MINOR SCALES & KEYS

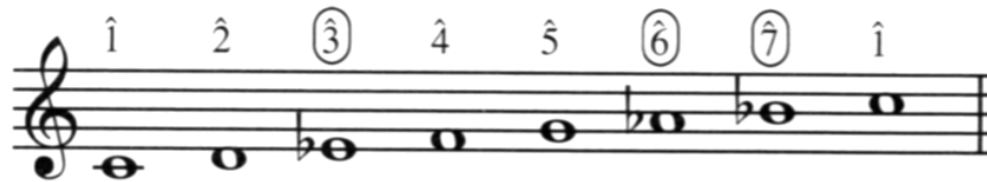
10 Sept 2018

THREE TYPES OF MINOR SCALES

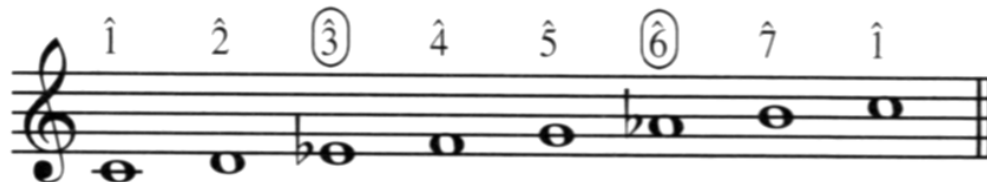
- NATURAL MINOR
 - key signature
- HARMONIC MINOR
 - now with the leading tone!
- MELODIC MINOR
 - different up + down to avoid augmented 2nd

THREE TYPES OF MINOR SCALES

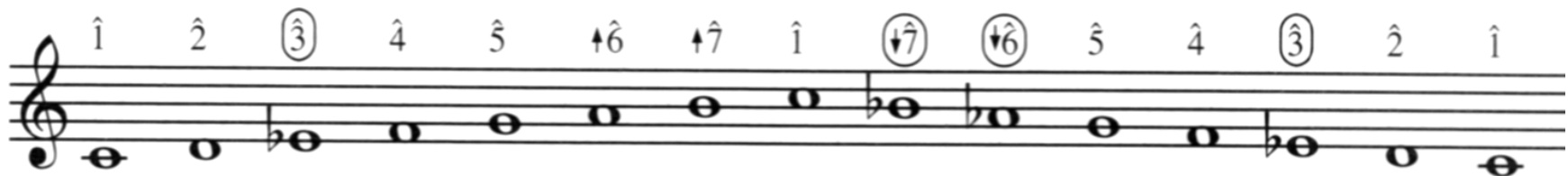
Natural minor



Harmonic minor



Melodic minor



NATURAL MINOR SCALE in C



Whole Half Whole Whole Half Whole Whole

C	D	E ^b	F	G	A ^b	B ^b	C
^	^	^	^	^	^	^	^
1	2	^b 3	4	5	^b 6	^b 7	8

NATURAL MINOR SCALE in C



Whole Half Whole Whole Half Whole Whole

C	D	E _b	F	G	A _b	B _b	C
do	re	me	fa	sol	le	te	do

NATURAL MINOR SCALE in D



Whole

Half

Whole

Whole

Half

Whole

Whole

C

D

E^b

F

G

A^b

B^b

C

D

E

F

G

A

B^b

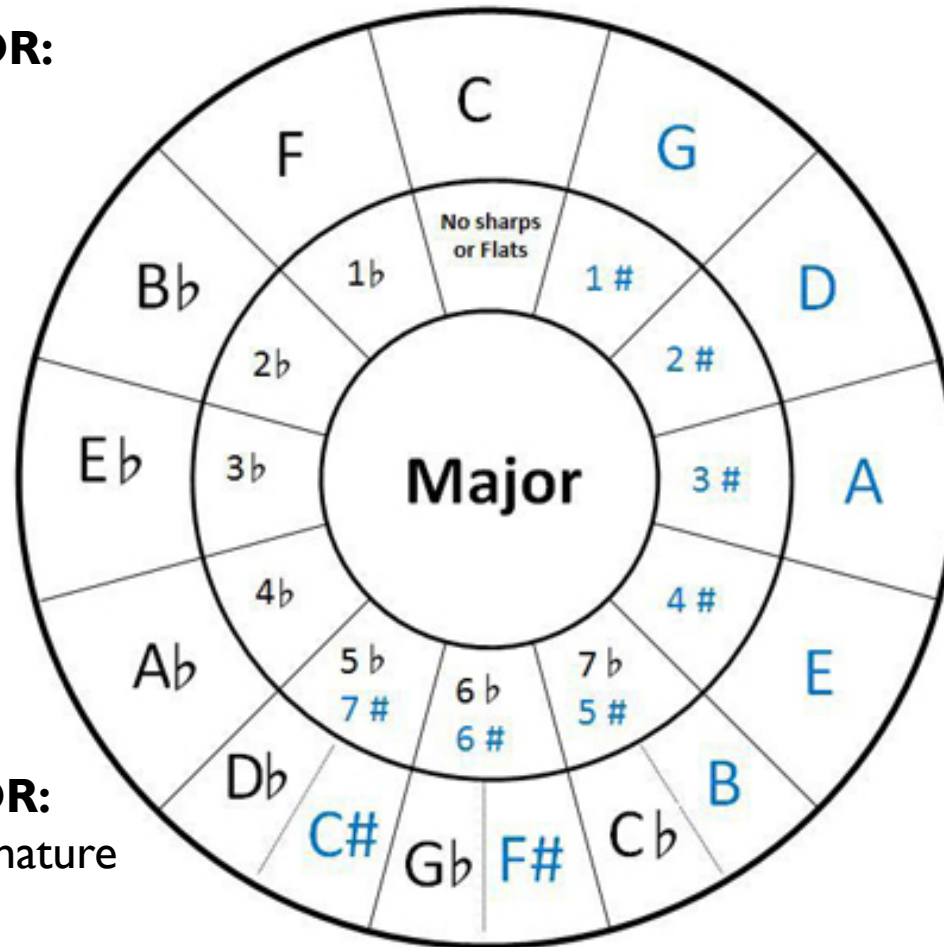
C

D

KEY SIGNATURES

Circle of Fifths

RELATIVE MINOR:
same key signature



MAJOR
^^^
(3 half steps = m3)
v v v
NATURAL MINOR

C major
(m3)
A minor

PARALLEL MINOR:
same PITCH, diff. signature
C major + C minor

HARMONIC MINOR SCALE in C



Whole Half Whole Whole Half +2 Whole

C D E \flat F G A \flat B C

^ ^ ^ ^ ^ ^ ^ ^
I 2 \flat 3 4 5 \flat 6 7 I

LEADING TONE appears! Helps V lead to I.

HARMONIC MINOR SCALE in C



Whole

Half

Whole

Whole

Half

+2

Whole

C

D

E_b

F

G

A_b

B

C

do

re

me

fa

sol

le

ti

do

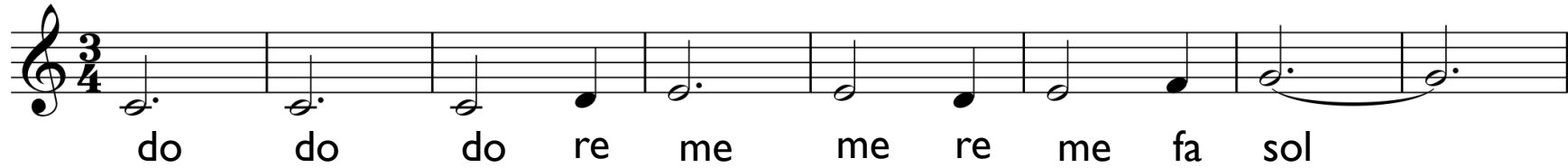
LEADING TONE appears! Helps V lead to I.

SIGHT SINGING

1 1 1 2 3 3 2 3 4 5

1 5 3 1 5 4 3 2 1

SIGHT SINGING



do do do re me me re me fa sol

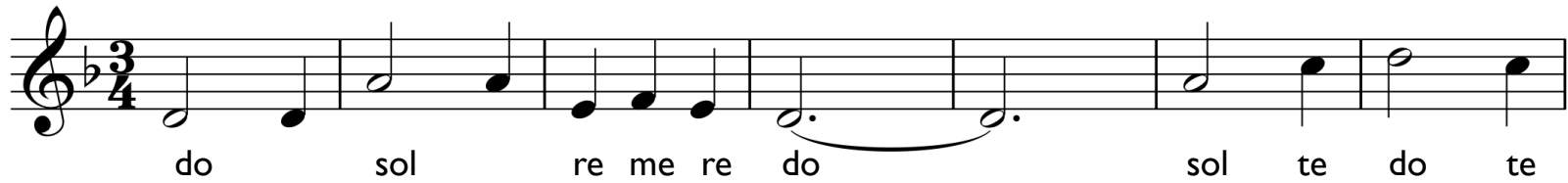
A musical staff in 3/4 time with a treble clef. The notes are: do (half note), do (half note), do (half note), re (quarter note), me (quarter note), me (quarter note), re (quarter note), me (quarter note), fa (quarter note), and sol (half note). The last two notes, fa and sol, are connected by a slur.



do sol me do sol fa me re do

A musical staff in 3/4 time with a treble clef. The notes are: do (quarter note), do (quarter note), do (quarter note), sol (quarter note), sol (quarter note), me (quarter note), me (quarter note), do (quarter note), do (quarter note), sol (quarter note), fa (quarter note), me (quarter note), re (quarter note), and do (half note). The last two notes, re and do, are connected by a slur.

SIGHT SINGING



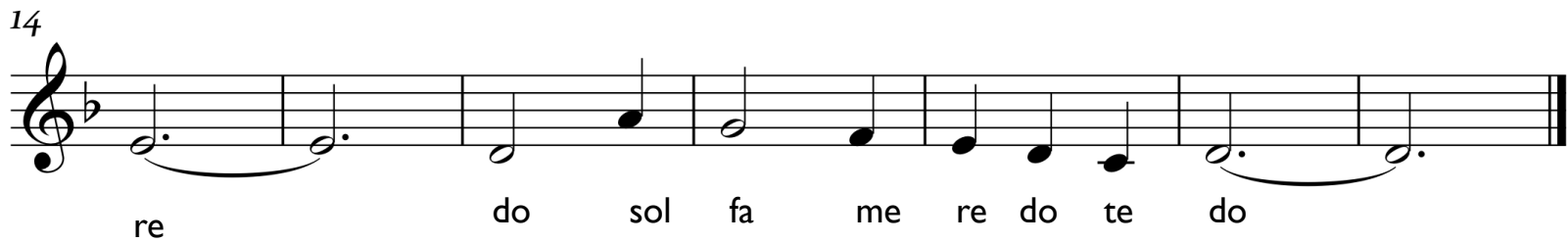
do sol re me re do sol te do te

8



sol te fa sol do te sol fa me

14



re do sol fa me re do te do

SIGHT SINGING

1
5
2 3 2 1
5 7 1 7

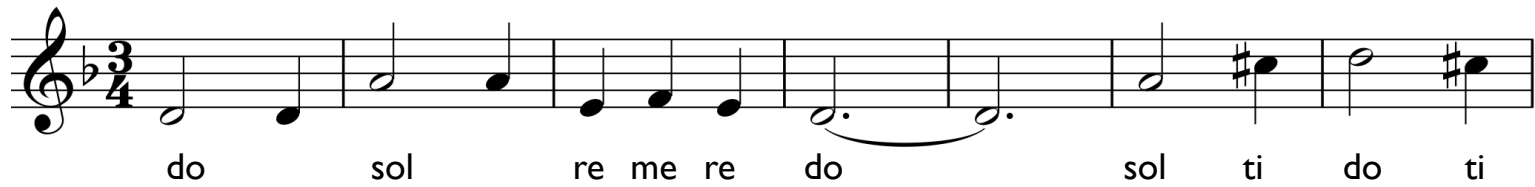
8

5 7 4 5
1
7 5 4 3

14

2
1 5 4 3 2 1 7 1

MAKE IT HARMONIC MINOR



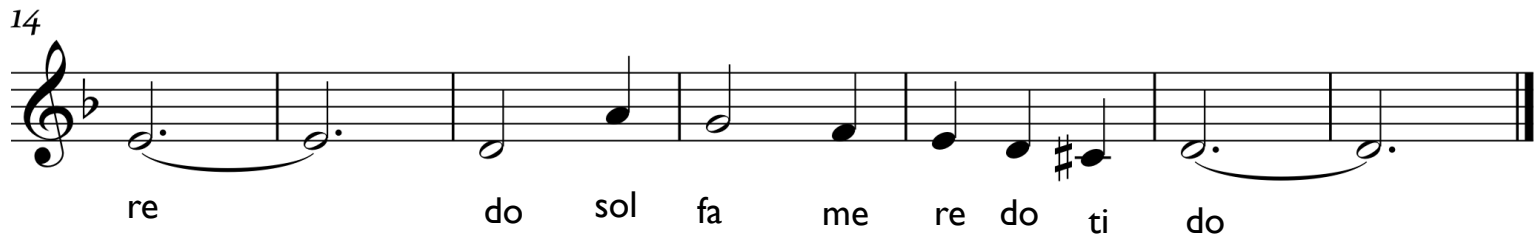
do sol re me re do sol ti do ti

8



sol ti fa sol do ti sol fa me

14



re do sol fa me re do ti do

MAKE IT HARMONIC MINOR

1
5
2 3 2 1
5 7 1 7

8

5 7 4 5
1 7 5 4 3

14

2
1 5 4 3 2 1 7 1

MELODIC MINOR SCALE in C (going UP)



Whole Half Whole Whole Whole Whole Half

C	D	E ^b	F	G	A	B	C
^	^	^	^	^	^	^	^
1	2	^b 3	4	5	6	7	8
do	re	me	fa	sol	la	ti	do

5-6-7-8 is like major on way up
Avoids augmented 2nd to **LEADING TONE!**

MELODIC MINOR SCALE in C (going DOWN)



Whole

Half

Whole

Whole

Half

Whole

Whole

C

D

E^b

F

G

A^b

B^b

C

^

^

^

^

^

^

^

^

1

2

^b3

4

5

^b6

^b7

8

do

re

me

fa

sol

le

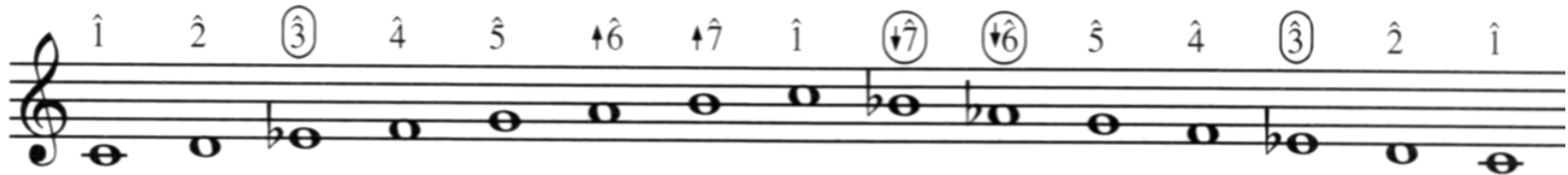
te

do

8-7-6-5 is like natural minor on way down
Avoids augmented 2nd (no leading tone)!

MELODIC MINOR

Melodic minor



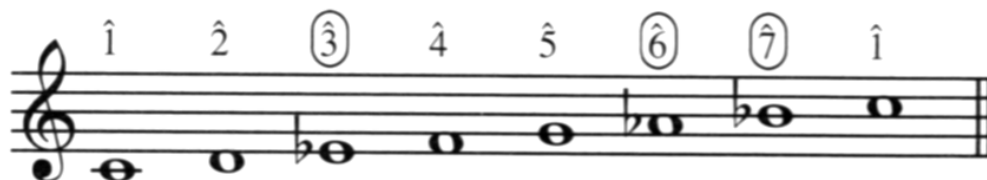
Schubert – *Die Wintereisse* (I. Gute Nacht)

1 6 4 2 | 1 5 3 1 | 3 4 5 5 5 #6 #7 |

1 6 4 2 | 1 5 3 1 | 3 4 5 5 5 5 |

THREE TYPES OF MINOR SCALES

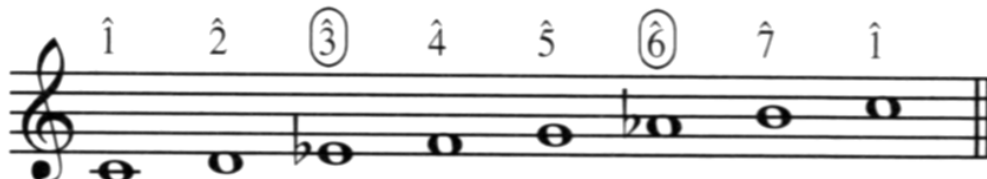
Natural minor



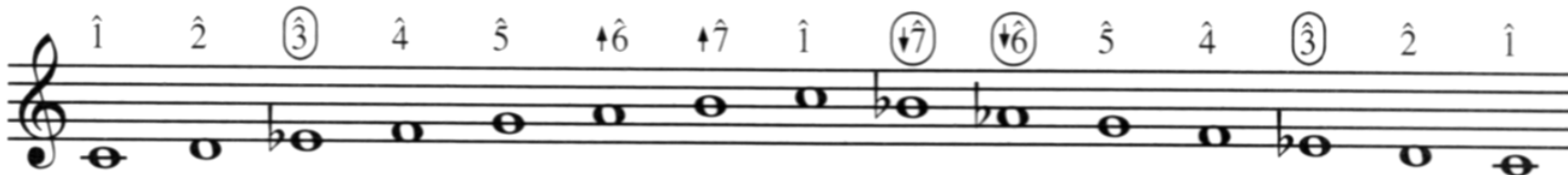
MINOR PENTACHORD:

1-2-3-4-5 always same

Harmonic minor



Melodic minor



TERMS FOR REVIEW

- NATURAL MINOR
- HARMONIC MINOR
- MELODIC MINOR
- MINOR PENTACHORD
- RELATIVE MINOR
- PARALLEL MINOR
- LEADING TONE
- AUGMENTED 2ND (+2)