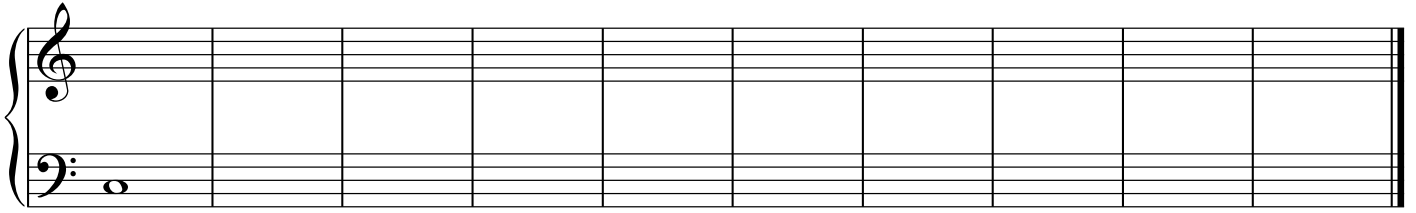
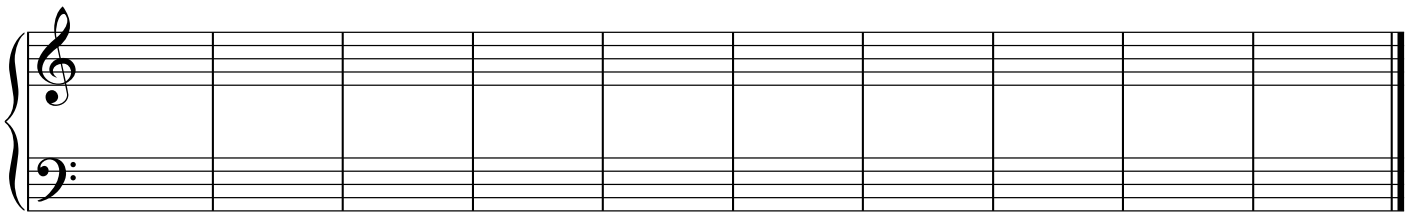


4th + 5th Species



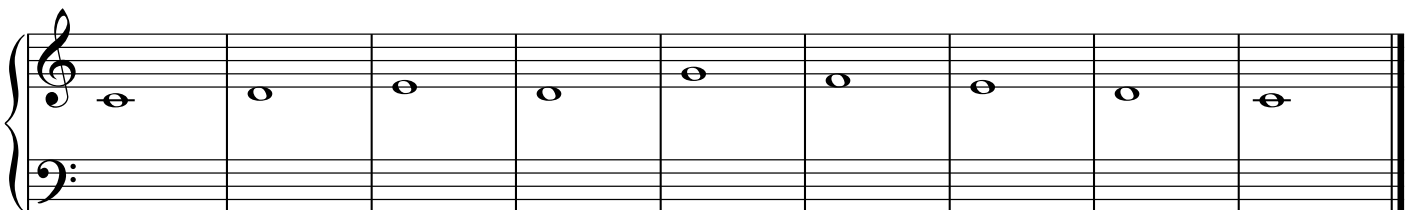
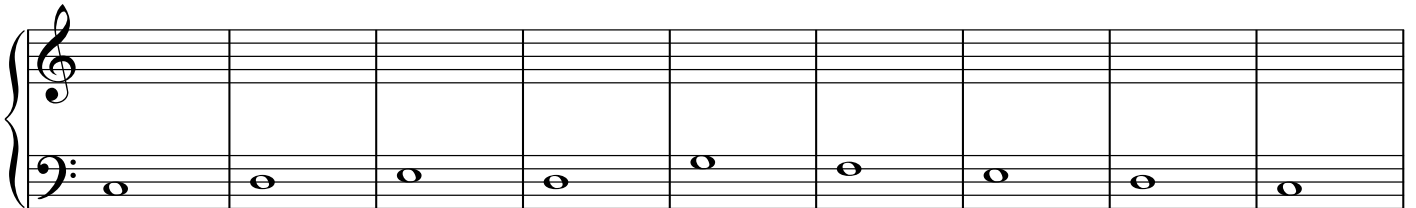
1. Write a cantus firmus in the bass clef. Remember to end with re-do (scale degrees 2-1).
2. Write a line of fourth species counterpoint above your cantus firmus in the treble clef and mark the intervals between voices.

3. Copy your cantus firmus from #1 into the treble clef.



4. Write a line of fourth species counterpoint below your cantus firmus in the bass clef and mark the intervals between voices. Be sure to begin on the tonic in the bass.

5. Write a line of fifth species counterpoint above the given cantus firmus and mark intervals.



6. Write a line of fifth species counterpoint below the given cantus firmus and mark intervals.